

SWISS optio gas mixer



gas mixer

The gas mixer at a glance :

- for the homogeneous mixture of two gases according the conversion table
- continuous adjustment of the withdrawn flow-rate
- available in different flow ranges (0-3 l/min, 0-16 l/min and 0-32 l/min)
- simple and easy to maintain construction
- with integrated clamping rail bracket

The **gas mixer** consists of a mixing casing, two flowmeters for the different gases and an integrated clamping rail bracket.

The **gas mixer** allows a homogeneous mixture of two gases in any desired mixing ratio directly to the patient.

With the inlets with gas specific NIST housings, no danger of confusion of the gas connectors.

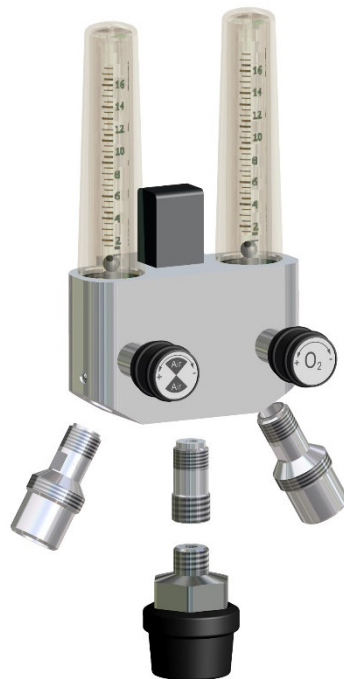
The **gas mixer** can be complemented with an additional sparkling or aerosol humidifier.

CE marking according to the Guideline for Medical Products 93/42/EEC.

Technical data :

Supply pressure	4.5 bar (+/- 0.2 bar)
Flow rate ranges	0-3 l/min, 0-16 l/min, 0-32 l/min
Measurement accuracy	+/- 10% or 0.5 l/min of measured value (whichever is higher)
Gas	Air + O ₂ / O ₂ + N ₂ O
Inlet	G1/4" inner thread, NIST housing
Outlet	G1/4" inner thread, G1/4" outer thread, 9/16 UNF, G3/8" outer thread
Material	aluminium, stainless steel, brass, external parts nickel-plated or anodized, PE, PA, measuring and cover tube made of PC
Sealing material	PA, EPDM
Mounting	clamping rail bracket for rails 20x8 up to 40x8
Operating temperature	-20° up to +60°C
Dimensions	W x H x D : 119 x 180 x 82 mm
Weight	580g

Model variants Art.GM44xx



Necessary information when ordering :

Gas (combination)	Air + O ₂ / O ₂ + N ₂ O
Flow rate range	0-3 l/min, 0-16 l/min, 0-32 l/min
Inlet	G1/4" inner thread, NIST housing
Outlet	G1/4" inner thread, G1/4" outer thread, 9/16 UNF, G3/8" outer thread

Subject to changes. All trademarks are the property of Gloor Ltd.